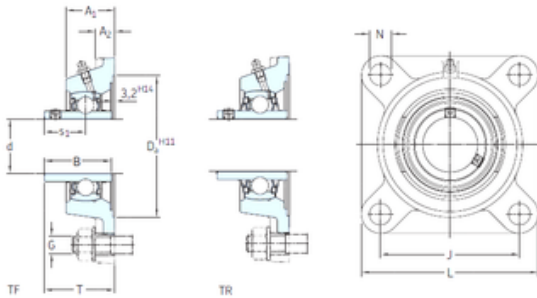




ISO BEARING-SINGAPORE (PTE)LTD.

SKF FY 1.1/4 TF bearing units

Bearing No. FY 1.1/4 TF



FY 1.1/4 TF Bearing 2D drawings and 3D CAD models

Bore Diameter	31.75 mm
Width	42,9 mm
d	31.75 mm
s1	25,4 mm
A1	34,5 mm
B	42,9 mm
G	12 mm
J	92 mm
L	118 mm
T	46,4 mm
A2	13 mm
Weight	1,45 Kg
Basic dynamic load rating (C)	25,5 kN
Basic static load rating (C0)	15,3 kN
Fatigue load limit (Pu)	0,655
Category	Flange Block Bearings
Inventory	0.0
Manufacturer Name	SKF
Minimum Buy Quantity	N/A
Weight / Kilogram	1.38
EAN	7316577754929
Product Group	B02222
Number of Mounting Holes	4
Mounting Method	Set Screw
Housing Style	4 Bolt Square Flange Block
Rolling Element	Ball Bearing



ISO BEARING-SINGAPORE (PTE)LTD.

Housing Material	Cast Iron
Expansion / Non-expansion	Non-expansion
Mounting Bolts	1/2 Inch
Relubricatable	Yes
Insert Part Number	YAR 207-104-2F
Seals	M Seal
Housing Configuration	1 Piece Solid
Pilot Configuration	No Pilot
Inch - Metric	Inch
Long Description	4 Bolt Square Flange Block; 1-1/4" Bore; 5.1" Bolt Circle; 3-5/8" Bolt Spacing; 1 Piece Solid; Set Screw Mount; Cast Iron; Ball Bearing; 1-11/16" Length Thru Bore; Relubricatable;
Other Features	Single Row Standard Duty Wide Inner Race Open End Has Flinger Y Bearing
Category	Flange Block
UNSPSC	31171501
Harmonized Tariff Code	8483.20.40.40
Noun	Bearing
Keyword String	Flanged
Manufacturer URL	http://www.skf.com
Manufacturer Item Number	FY 1.1/4 TF
Weight / LBS	3.3
Length Thru Bore	1.688 Inch 42.87 Millimeter
Bore	1.25 Inch 31.75 Millimeter
Nominal Bolt Circle Diameter Round	5.1 Inch 130 Millimeter
Cartridge Pilot Diameter	0 Inch 0 Millimeter
Cartridge Pilot Depth	0 Inch 0 Millimeter



ISO BEARING-SINGAPORE (PTE)LTD.

Bolt Spacing	3.625 Inch 92.08 Millimeter
Housing material	Cast iron
D_a	106.4 mm
D_{b1}	87 mm
D_{b2}	95 mm
A	34.5 mm
A_1	13 mm
A_3	3.2 mm
A_5	22 mm
N	14 mm
s_1	25.4 mm
R_G	1/4-28 UNF
R_1	22.5 mm
D_N	6.5 mm
SW_N	7 mm
G_N	1/4-28 SAE-LT
J_6	106 mm
J_7	29 mm
N_4	4 mm
Basic dynamic load rating C	25.5 kN
Basic static load rating C_0	15.3 kN
Fatigue load limit P_u	0.655 kN
Limiting speed	5300 r/min
Mass bearing unit	1.4 kg
Thread grub screw G_2	5/16-24 UNF
Hexagonal key size for grub screw N	3.969 mm
Recommended tightening torque for grub screw	6.5 N · m
Recommended diameter for attachment bolts, mm G	12 mm
Recommended diameter for attachment bolts, inch G	0.5 in



ISO BEARING-SINGAPORE (PTE)LTD.

Housing	FY 507 M
Bearing	YAR 207-104-2F
End cover	ECY 207